



21a Mill Street, Drummore

Stranraer, DG9 9PS

Offers Over £105,000 are invited

21a Mill Street

Drummore, Stranraer

The village of Drummore provides local amenities including general store, hotel, public house, restaurant/café, primary school and general practice healthcare while all major amenities are to be found in the town of Stranraer approximately 18 miles to the north and include supermarkets, hospital, indoor leisure pool complex and secondary school. The surrounding area is renowned for its mild climate, rugged coastline, wonderful sandy beaches, and access to a number of outdoor sporting pursuits including fishing, walking, sailing and excellent golf courses.

Council Tax band: B

Tenure: Freehold

- Popular seaside village location
- Within easy reach of all village amenities
- Pleasant views over farmland to the rear of the garden
- Excellent condition throughout
- Recently installed kitchen
- Well-appointed bathroom
- Re-roofed in the recent past
- Enclosed garden ground to the rear

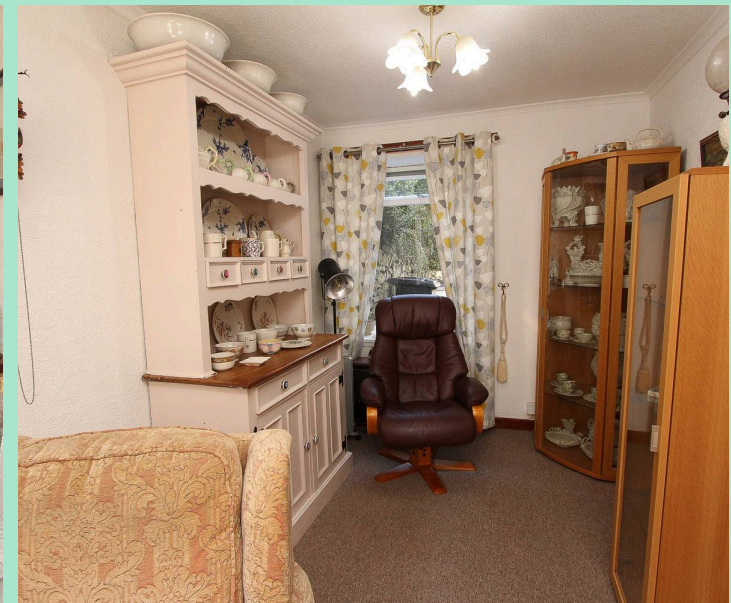


21a Mill Street

Drummore, Stranraer

Nestled in the heart of a popular seaside village, this charming two-bedroom terraced house offers an exceptional opportunity to enjoy coastal living within easy reach of all local amenities. Immaculately presented and maintained to an excellent standard throughout, the property seamlessly blends comfort and practicality. Step inside to discover a thoughtfully designed interior, featuring a recently installed kitchen with contemporary fittings and ample workspace, perfect for both every-day living and entertaining. The well-appointed bathroom provides a relaxing retreat, while the two bedrooms offer peaceful sanctuaries with plenty of natural light. The home has benefited from being reroofed in the recent past. The welcoming living spaces are complemented by tasteful décor and a sense of warmth, making this an inviting home for first-time buyers, downsizers, or those seeking a tranquil coastal escape.

To the rear of the property, an enclosed garden ground provides a private haven, ideal for relaxing or entertaining outdoors. The garden has been thoughtfully laid out to lawn, bordered by mature shrubs and screen hedges that offer both privacy and year-round greenery. From the top of the garden, enjoy pleasant and far-reaching views over the surrounding farmland and countryside. Directly off the back door, a small paved patio area offers the perfect spot for outdoor relaxing.



Hallway

The property is accessed by way of a wooden storm door leading to a glazed interior door to the hallway. The hallway provides access to all the ground-floor accommodation and the spindle-and-rail staircase to the first floor.

Lounge/Diner

A double aspect lounge/diner featuring a Fyfe stone fire surround housing an open fire. There is a TV point.

Kitchen

The kitchen has recently been fitted with a range of floor units with marble-style worktops incorporating a stainless steel sink with a mixer tap. There is an electric cooker point and plumbing for an automatic washing machine. Vinyl wall panelling.

Landing

The split landing provides access to the bathroom, bedrooms and the floored attic.

Bathroom

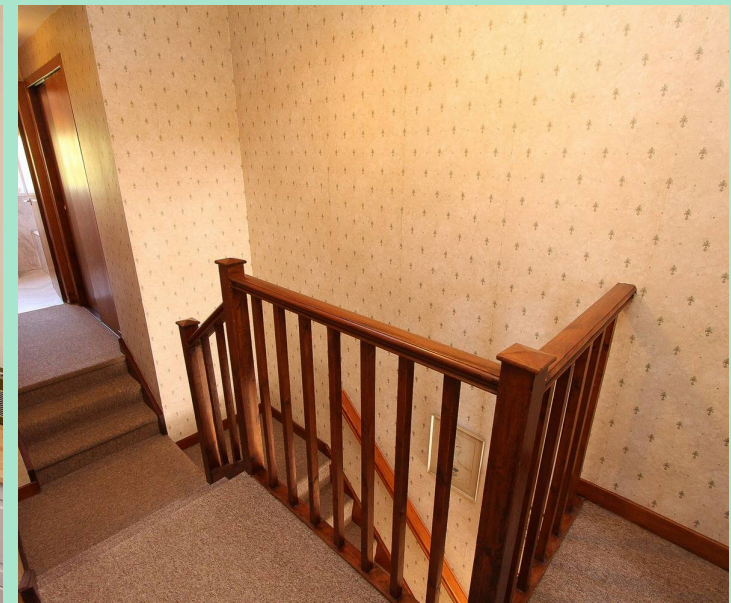
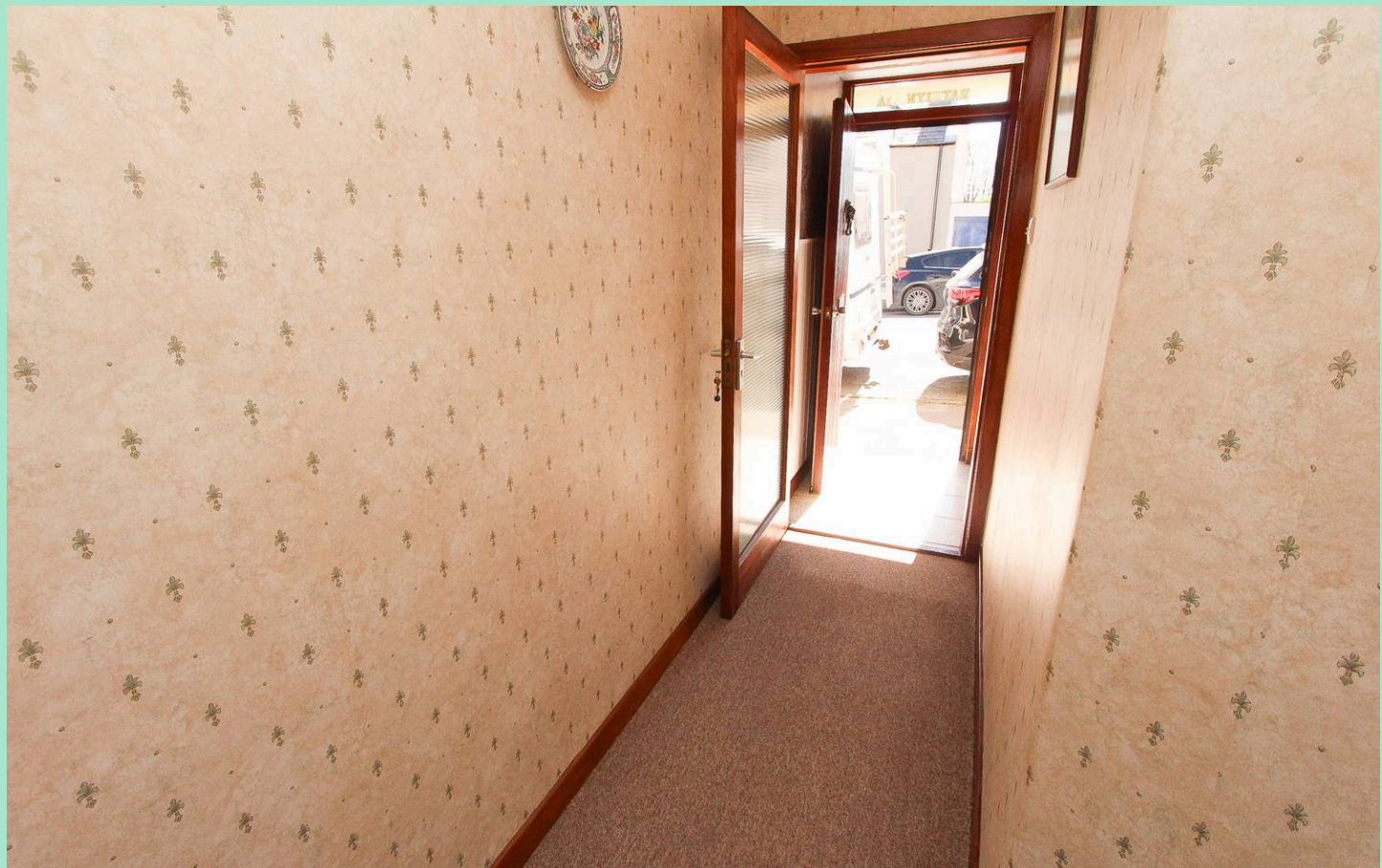
The vinyl-panelled bathroom is fitted with a three-piece suite in white comprising a WHB, WC and a bath with an electric shower over. Electric fan heater.

Bedroom 1

A double bedroom to the front with a built-in wardrobe.

Bedroom 2

A bedroom to the rear with a built-in wardrobe.



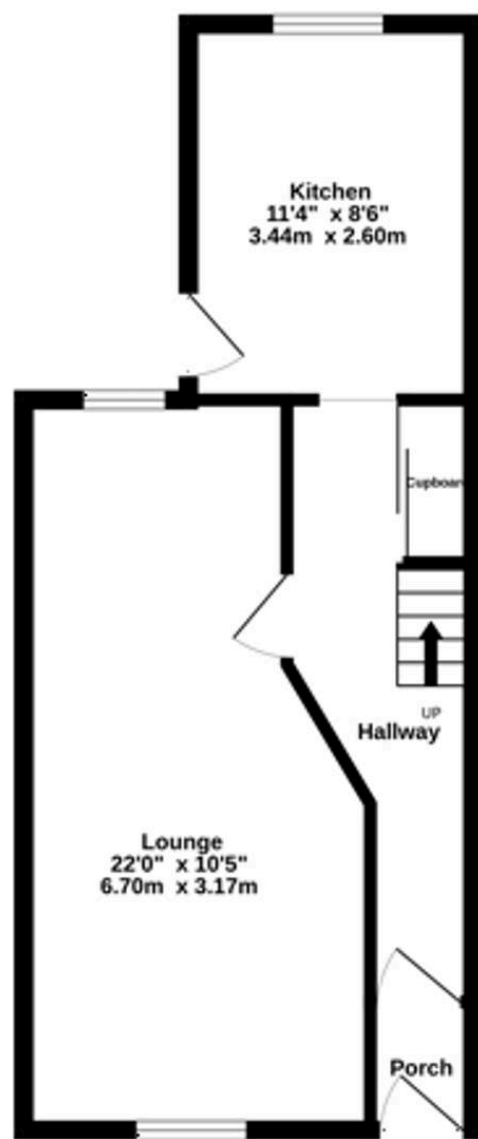
GARDEN

An area of enclosed garden ground to the rear. From the top of the garden there are pleasant views over the surrounding countryside. The garden has been laid out to lawn with mature shrub borders and screen hedges. There is a small paved patio area directly off the back door.

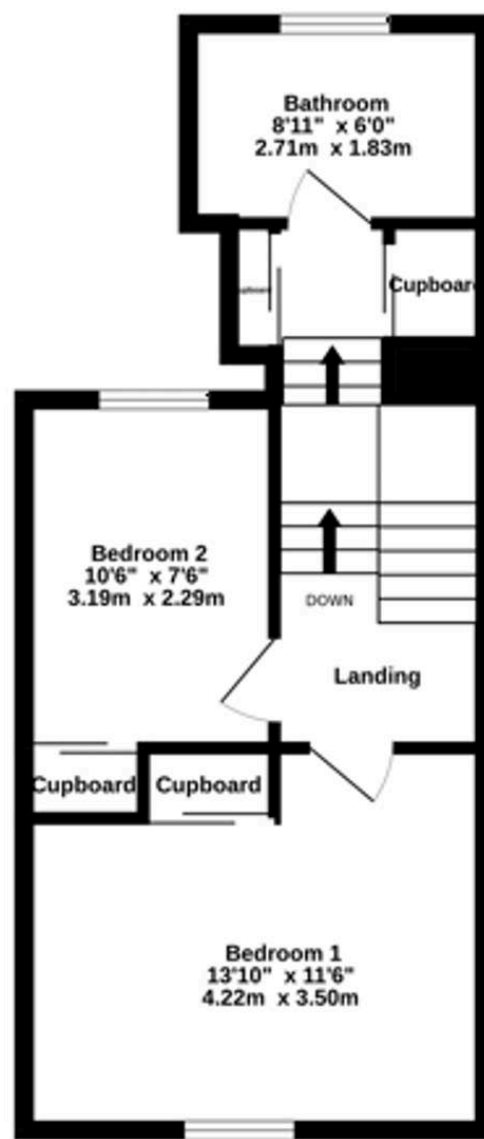
On street - Parking



Ground Floor
392 sq.ft. (36.4 sq.m.) approx.



1st Floor
393 sq.ft. (36.5 sq.m.) approx.



TOTAL FLOOR AREA : 785 sq.ft. (72.9 sq.m.) approx.
Measurements are approximate. Not to scale. Illustrative purposes only
Made with Metropix 02026

Conditions of Sale We have attempted to make our sales details as accurate as possible from the information we have about this property. If there is any point which is of particular importance please contact our office and we will endeavour to check the information. We would advise this course of action if prospective purchasers are travelling some distance to view the subjects of sale. All dimensions and distances etc are approximate and photographs are intended only to give a general impression. Systems are untested and appliances are sold as seen. Prospective purchasers should make their own investigations and obtain their own reports as they think necessary. The contract to sell will be based only on the concluded missives. These particulars and any other correspondence or discussions will not form part of the contract. If we can be of further assistance please do not hesitate to contact us. Pre-sale Appraisal If you are considering moving we would be delighted to carry out a pre-sale appraisal of your existing property. Terms and conditions apply. For full details contact one of our branches.





South West Property Centre Ltd

South West Property Centre, Charlotte Street - DG9 7ED

01776 706147

property@swpc.co.uk

www.southwestpropertycentre.co.uk



Please note that under the 2017 AML regulations we are legally required to carry out money laundering checks against purchasers. Upon verbal acceptance of an offer, we require to identify the purchaser for Anti-Money Laundering purposes. Our integrated providers will carry out the necessary checks. Failure to provide required identification may result in an offer not being considered.